

# Are young people still smoking in the UK?



## OVERALL BEHAVIOUR



**8.2%**

of 15 year olds in England currently smoke



**2.7%**

of 15 year olds in England occasionally smoke



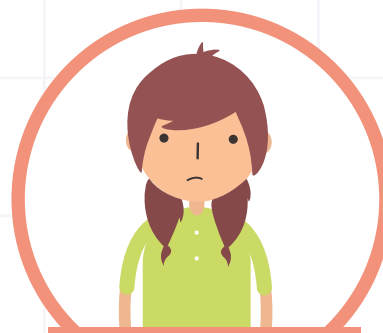
**5.5%**

of 15 year olds in England regularly smoke



**18.4%**

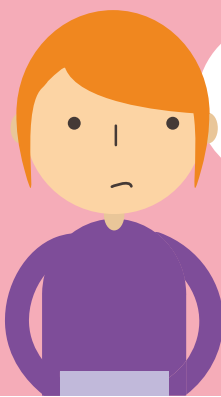
of 15 year olds in England have tried e-cigarettes



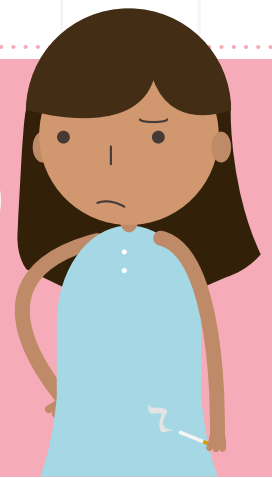
**15.2%**

of 15 year olds in England have tried other tobacco products

## GENDER



Girls are **more likely** to smoke tobacco products than boys.



How many 15 year olds **currently** smoke?

**9.8%**  
of girls

**6.6%**  
of boys

How many 15 year olds **regularly** smoke?

**6.1%**  
of girls

**4.8%**  
of boys

How many 15 year olds **occasionally** smoke?

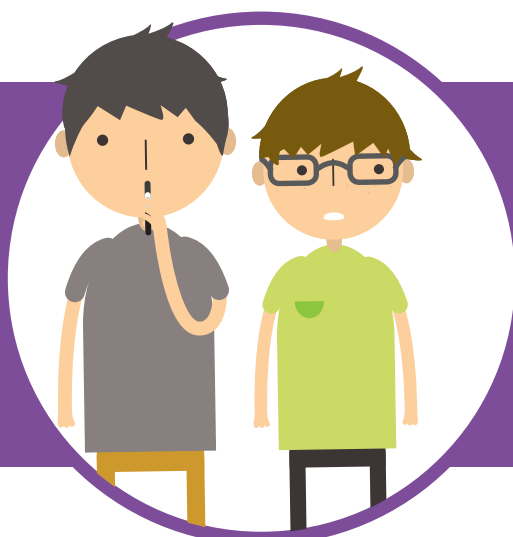
**3.7%**  
of girls

**1.8%**  
of boys

How many 15 year olds have **tried other** tobacco products?

**16.6%**  
of girls

**13.8%**  
of boys



Boys are **more likely** to try e-cigarettes than girls

**18.8%**  
of boys have tried e-cigarettes

**17.8%**  
of girls have tried e-cigarettes

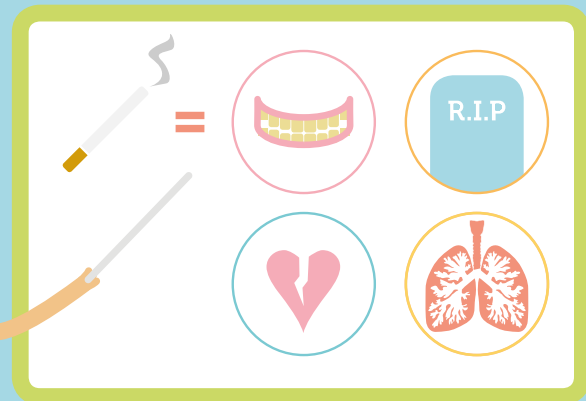
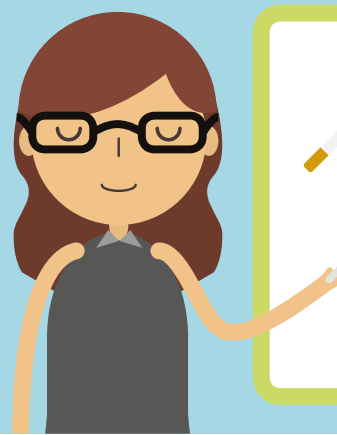
Join the debate. Get inspired.

[www.social-change.co.uk](http://www.social-change.co.uk)

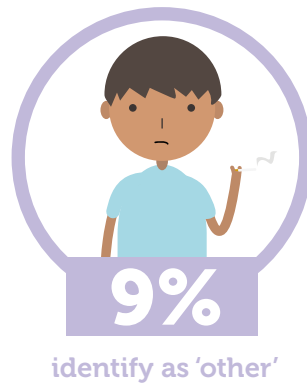
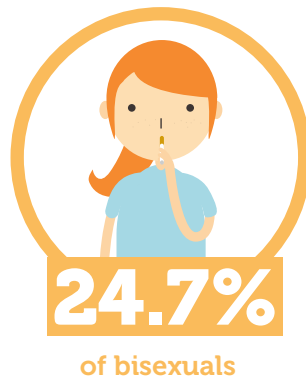
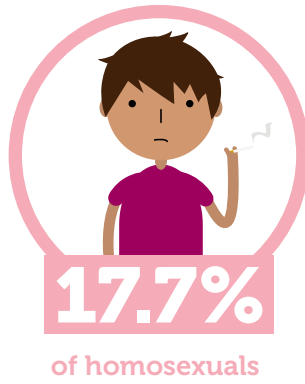
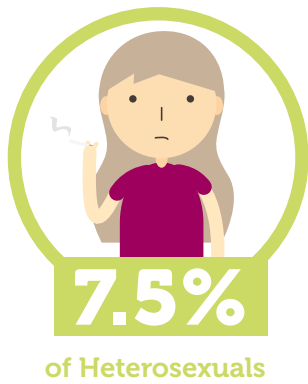
Data from the What About YOUth (WAY) survey, 2014/15 was used for this infographic.

# SEXUALITY

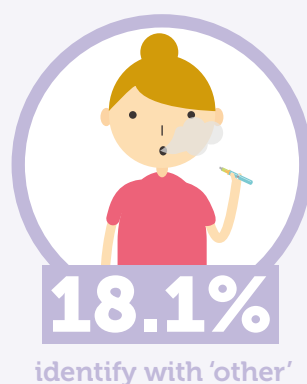
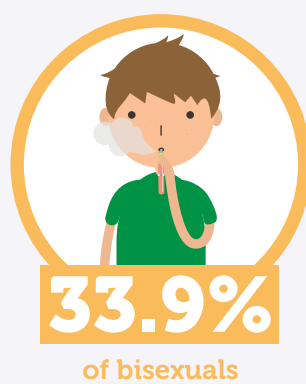
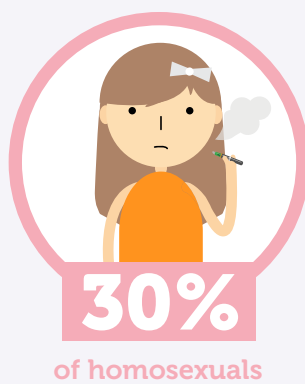
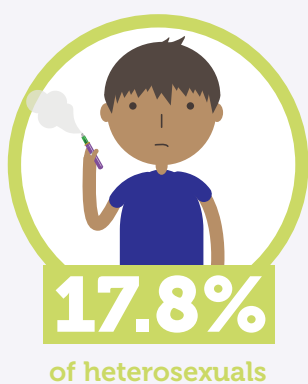
LGBTQ youth are **more likely** to smoke.



## How many young people **currently smoke**?



## How many young people have **tried e-cigarettes**?



### How many young people **occasionally** smoke?

**2.5%**  
of heterosexuals

**5.9%**  
of homosexuals

**8.5%**  
of bisexuals

**3%**  
identify as 'other'

### How many young people have tried **other tobacco products**?

**14.9%**  
of heterosexual

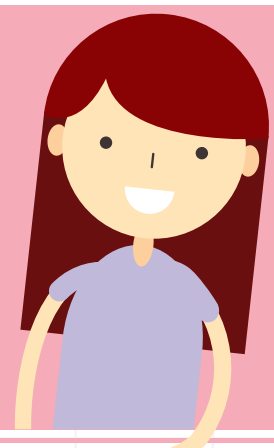
**18.9%**  
of homosexuals

**26.2%**  
of bisexuals

**14.1%**  
identify as 'other'

# REGIONAL BREAKDOWN

Young people in the **North of England** are more likely to be **current smokers**.



**North West England** has the highest prevalence that **e-cigarettes**.

**24.5%**

**North East England** has the highest prevalence that **currently smoke**.

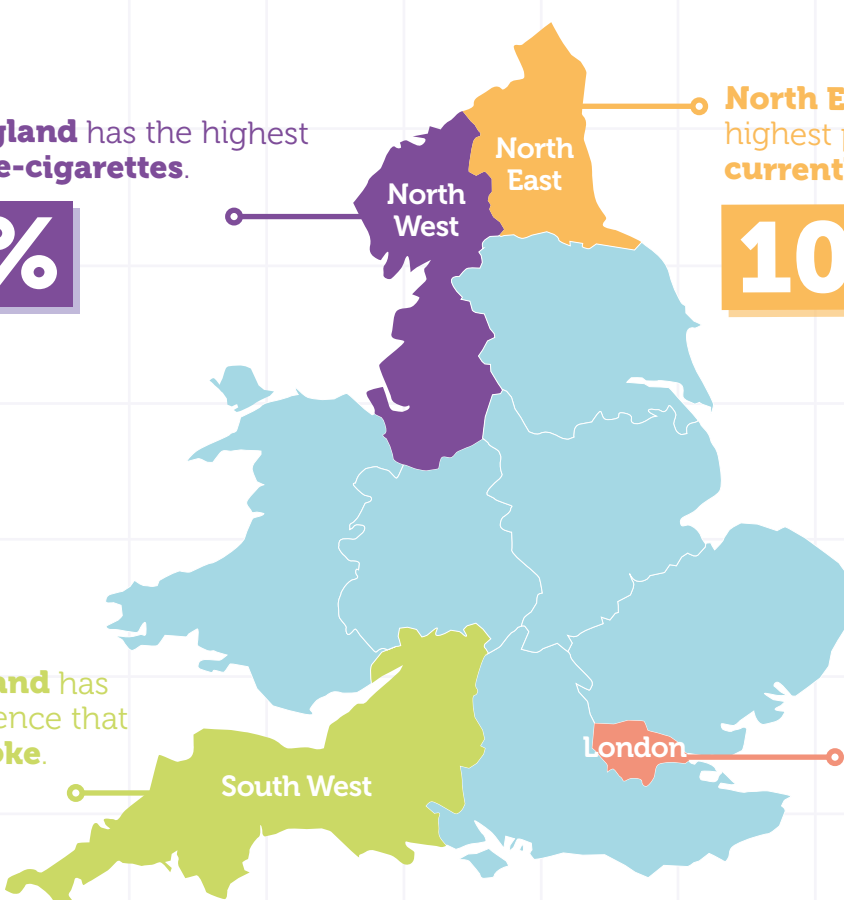
**10.1%**

**South West England** has the highest prevalence that **occasionally smoke**.

**3.5%**

**London** has the highest prevalence that **have tried other tobacco products**.

**21%**



Join the debate. Get inspired.

[www.social-change.co.uk](http://www.social-change.co.uk)

Data from the What About YOUth (WAY) survey, 2014/15 was used for this infographic.